

RESOLUTION #99-18

A RESOLUTION AMENDING BOISE COUNTY RESOLUTION #97-13,
A RESOLUTION ADOPTED MARCH 10, 1997, DECLARATION OF INTENT
TO ABANDON AND VACATE THE SOUTH FORK THORN CREEK ROAD

WHEREAS, the Boise County Board of Commissioners held a Public Hearing in
accordance with Idaho Code §40-203; and

WHEREAS, the Boise County Board of Commissioners abandoned and vacated the
section of the South Fork Thorn Creek Road as described in Resolution #97-13; and

WHEREAS, the Boise County Board of Commissioners received further information on
the legal description of the roadway to be abandoned and vacated, and

WHEREAS, the Boise County Board of Commissioners consider the corrected section of
roadway no longer to be in the public interest;

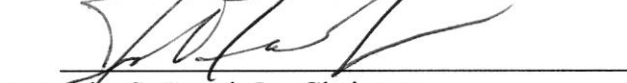
NOW THEREFORE BE IT RESOLVED, by the Board of Commissioners of Boise
County, Idaho, as follows:

Based upon the foregoing, the Board of Commissioners abandon and vacate the South
Fork Thorn Creek Road as described:

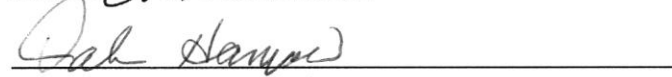
US Forest Service Road #377, at a beginning point 4.1 miles from State Highway
21, T5N, R5E, SW ¼, Sec 27, continuing to the Middle Fork of the Boise River
Road, excluding that certain portion of Forest Service Road #377 that crosses
through Sec 2 in T3N, R5E, and Sec 23, 26 and 35 in T4N, R5E to the north
property boundary of Cottonwood Creek Estates. See attached map.

APPROVED AND ADOPTED by the Boise County Board of Commissioners in open
session on the 17th day of May 1999.

BOARD OF BOISE COUNTY COMMISSIONERS



John S. Foard, Jr., Chairman

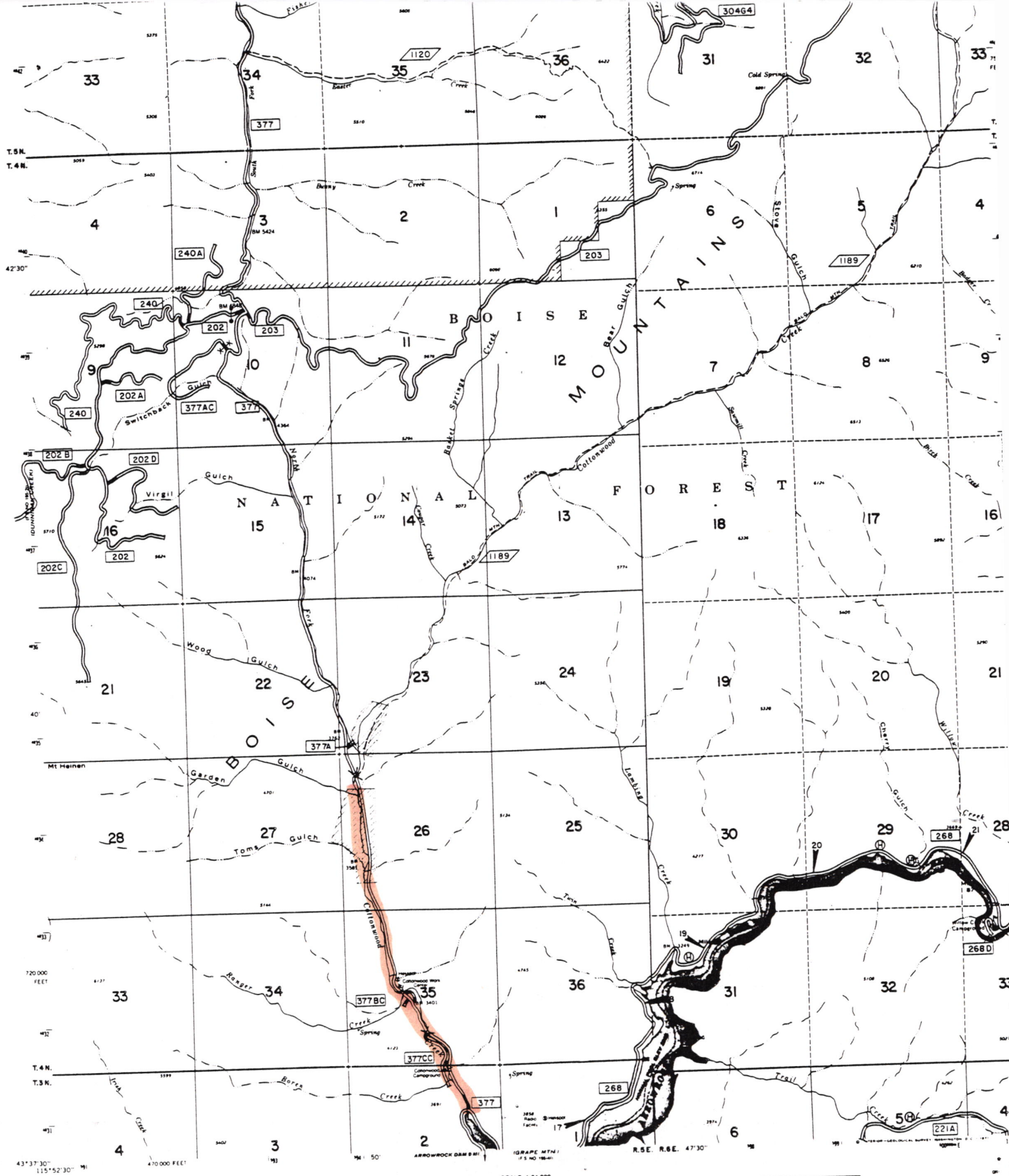
John N. Dyer, Commissioner

Dale Hanson, Commissioner

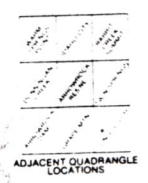
Attest:



Rora A. Canody, Clerk to the Board

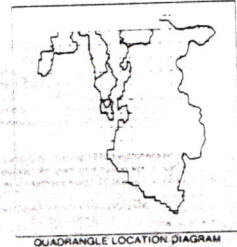


CONTOUR INTERVAL 40 FEET
 Datum is mean sea level
 Polyconic projection—1927 North American Datum
 MAPPED, EDITED AND PUBLISHED BY THE
 U.S. GEOLOGICAL SURVEY, 1989
 10,000-foot grid based on Idaho coordinate system, west
 zone, 1000 metre Universal Transverse Mercator grid, zone
 11
 Prepared by the U.S. Forest Service Geomatics Service
 Center, Salt Lake City utilizing 1976 field checked
 compilation guides. Revised information added using
 photogrammetric methods from 1:80,000—1975 scale aerial
 photography.
FOREST SUPERVISOR HEADQUARTERS
BOISE IDAHO



- Alienated Land within the National Forest Boundary
- National Forest Boundary
- Special Area Boundary
- Paved Primary
- Paved Secondary
- Improved Road
- Unimproved Road
- Trail
- Gate
- Mile Post

- LEGEND**
- U.S. Highway
 - State Highway
 - Forest Road
 - Forest Trail
- TOWNSHIP AND SECTION LINE CLASSIFICATION**
- Surveyed, Location Reliable
 - Surveyed, Location Approximate
 - Unsurveyed, BLM Protection
 - Tank Trap
 - HELISPOT



ARROWROCK RE
 197

REVISED
 (1981)
 (1982)
 (1983)
 (1984)
 (1985)
 (1986)
 (1987)
 (1988)
 (1989)
 (1990)
 (1991)
 (1992)

UTM GRID AND 1979 NA
 DECLINATION AT CENTER
 PRIMARY BASE